



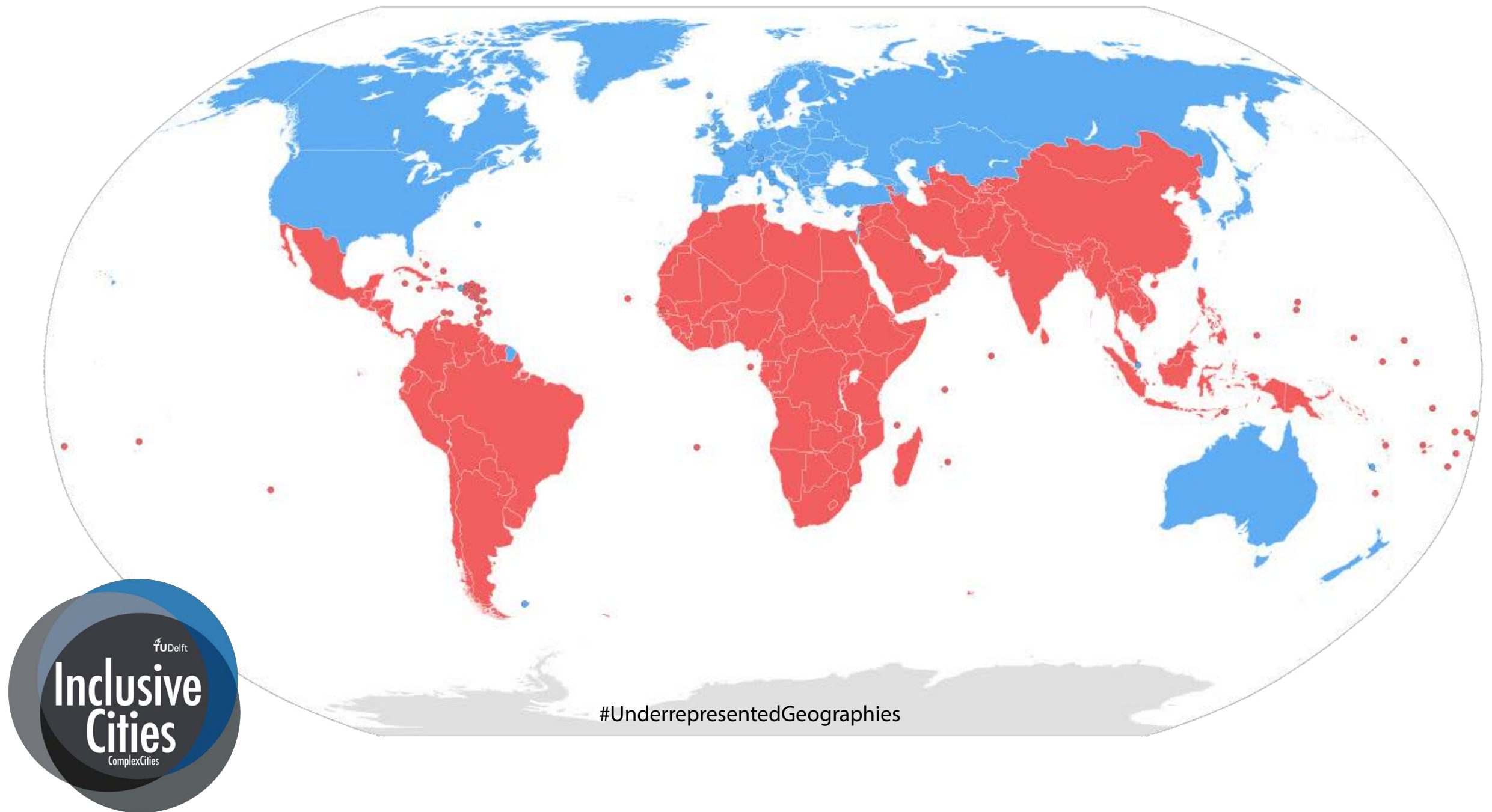
# Inclusive Cities of the Global South

Seeking for new planning and design paradigms for rapid urbanisation in weak institutional environments



# the 'Global South'

What is the 'Global South'?



IMF Developing Countries Map, 2014 (revised) CC BY-SA 1.0

# What makes the GS different?

1. Pace of growth
2. Scale of change
3. Weak institutional environments
4. Unbalanced governance arrangements and weak rule of law
5. Rights deficit
6. Economic inequality (inequality of access)
7. Large vulnerability to environmental hazards
8. Strong presence of informal urbanisation processes
9. Strong role of informal institutions (Ostrom)

Research Theme #5

# International Planning and Developing Regions



# Global Urban Lab

# 17.000 enrolled students so far!

## Rethink the City: New approaches to Global and Local Urban Challenges

[Home](#) / [Find courses](#) / Rethink the City: New approaches to Global and Local Urban Challenges

### About this online course

**OVERVIEW**

**DETAILS**

**ADMISSION**

Learn about today's urban challenges focusing on developing countries, referred to as the Global South. We will debate the benefits associated with three different themes, going beyond traditional urban strategies and policies:




**ENROLL ON EDX**



 Starts: Future dates to be announced

 Free

 Length: 6 weeks

 Effort: 3 - 4 hours per week

Close

1. Spatial justice

This site uses  here for more information.

# Spatial Justice/Housing/Resilience



# TU Delft | Global Initiative



## TU Delft | Global Initiative

Scientists from Delft University of Technology use their expertise to find concrete solutions for worldwide problems, in close cooperation with local partners. TU Delft | Global Initiative is their portal, platform and booster of Science and Technology for Global Development.

  
 Focus  
Areas

  
 Global  
Stories

# globalurbanlab.org

Join now!



**South circularity**

**Spatial Justice**

**Urban Resilience**

**Self Organisation**

**Global Housing**





Darinka Czischke Ljubetic  
Thematic Advisor  
[Self organisation & civil society]



Marcin Dabrowski  
Thematic Advisor  
[South circularity & Wellbeing]



Marja Elsinga  
Thematic Advisor  
[Global Housing]



Carolina Fiallo  
Media/Promotion  
Coordinator



Anna Klimczak  
Events Coordinator



Dick van Gameren  
Programme Leader



Henk Jonckers  
Programme Leader +  
Thematic Advisor  
[South circularity & Wellbeing]



Nelson Mota  
Thematic Advisor  
[Global Housing]



Diego Moya  
Media/Promotion  
Coordinator



Preetika Balasubramanian  
Education



Pablo Muñoz  
Acquisition



Karel van Oordt  
Projects/External



Igor Pessoa  
Education



Alejandra Quezada  
Events Coordinator



Selma Elrouby  
General Affairs



Roberto Rocco  
Events Coordinator +  
Thematic Advisor  
[Spatial Justice]



Arnout Sabbe  
General Affairs



Dominic Stead  
Thematic Advisor  
[Urban resilience]



Luz María Vergara  
Research and Publications



You









**Mutually reinforcing relationship  
between urbanisation & development**



# Other partners

- \*IHS Rotterdam (International Institute of Urban Management of the Erasmus University)
- \*ISS The Hague (international Institute of Social Studies)
- \*TU Eindhoven
- \*CEDLA (Centre for Latin American Documentation and Research of the UvA)
- \*UN-Habitat
- \*ARCADIS
- \*DELTARES
- \*SEVERAL UNIVERSITIES AROUND THE WORLD (Politecnico, TU Vienna, NCKU, SCUT, University of Sao Paulo, EiABC)



Many people work with developing countries OR comparative studies in the department and in the faculty albeit not always in the chair of Spatial Planning and Strategy



# One big framework

SPATIAL PLANNING & STRATEGY

## Three concepts

- \* GOVERNANCE
- \* SUSTANABILITY
- \* SPATIAL JUSTICE

# Our own version of the layer approach





# By following this cluster you will be able to:

- DESIGN a strategic PLAN, based on the SUSTAINABLE DESIGN of the physical environment
- EXPERIENCE a dynamic interaction with different stakeholders in a developing context and to incorporate their views in your plan and design.
- USE advanced and innovative planning tools to achieve sustainable and fair urban development
- DEVELOP both practical (planning and design) and research skills (research and writing)

# Example of student work

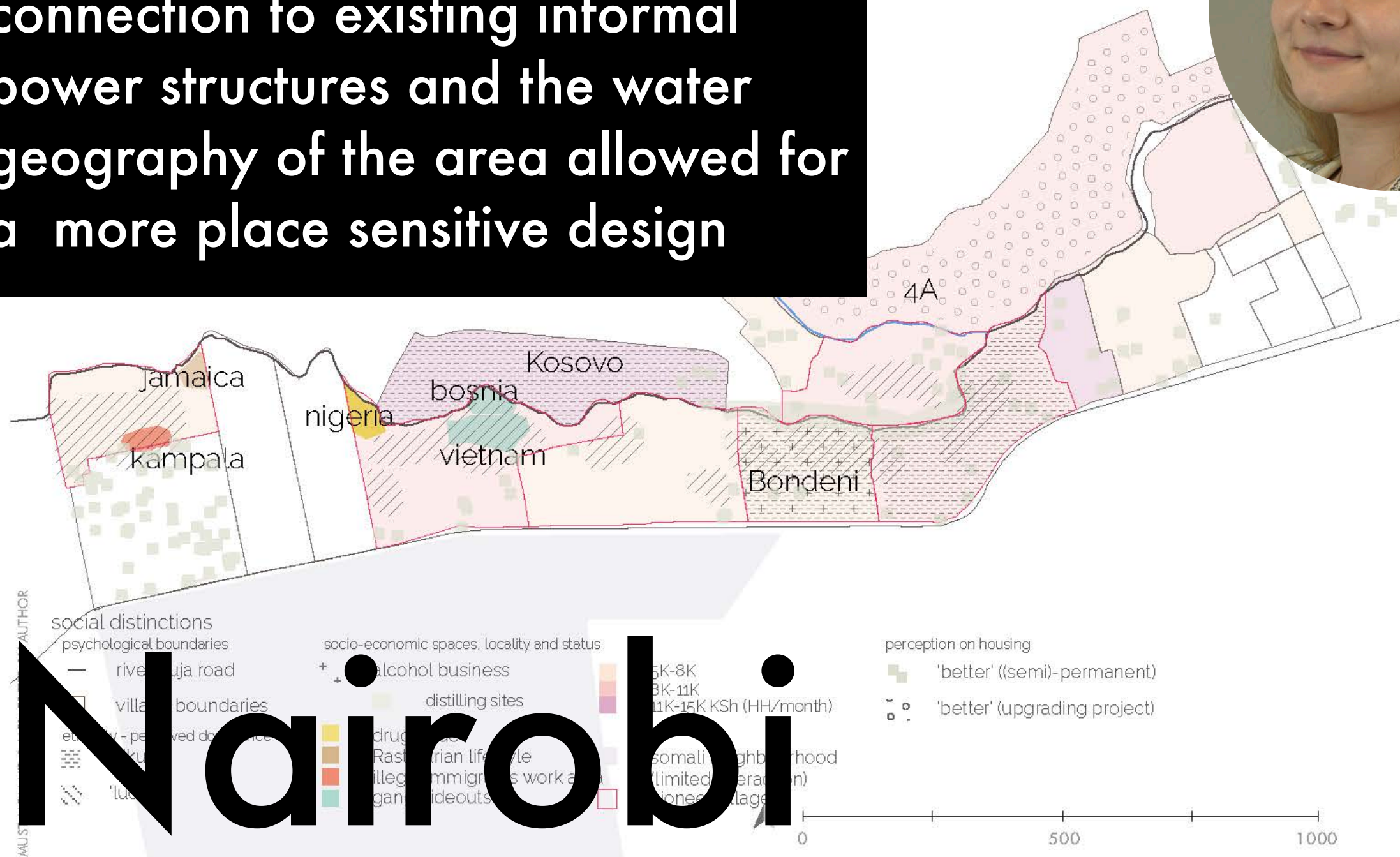
For more information, please visit the studio website:  
<https://complexcitiesstudio.org>



# Eva Labrujere: Mapping the power structures of Mathare (Nairobi) in connection to existing informal power structures and the water geography of the area allowed for a more place sensitive design



of stolen goods and thieves). In Van Staple's (2015) research becomes clear that these men at the same time are access to work and to earn performed within the spaces place under "the powerful



## LAYERS ANALYSIS: CONCLUSIONS

Concha Aranda:  
Mapping the  
spatial  
relationships  
between  
communities,  
natural systems,  
infrastructures  
and  
GOVERNANCE

### LAYER 5 : POPULATION

There is a big part of urban extension unconnected from the main services and facilities

### LAYER 4 : PRODUCTION-CONSUMPTION

The main infrastructure EN4 create a guideline for the industrial area.

### LAYER 3 : INFRASTRUCTURES

The industrial areas affect the natural landscape. The closeness of industries to water bodies and natural areas is dangerous.

### LAYER 2 : GOVERNANCE

The topography of the area highlight zones that should not be occupied by residential uses unless they are adapted. Something that is currently not happening

### LAYER 1 : NATURAL LANDSCAPE

of the area suffer from a lack of residential space. At the same time, the airport has a huge negative impact over the population in terms of noise pollution. However, it is an important source for job opportunities

The commercial and administrative areas highlight the main city centres and active zones within the cities extension.

The airport is a huge asset in terms of infrastructures but it is a barrier in relation to the natural landscape because of its big impact.

There are several areas that are under flooding risk and should be prevented from any kind of residential use.



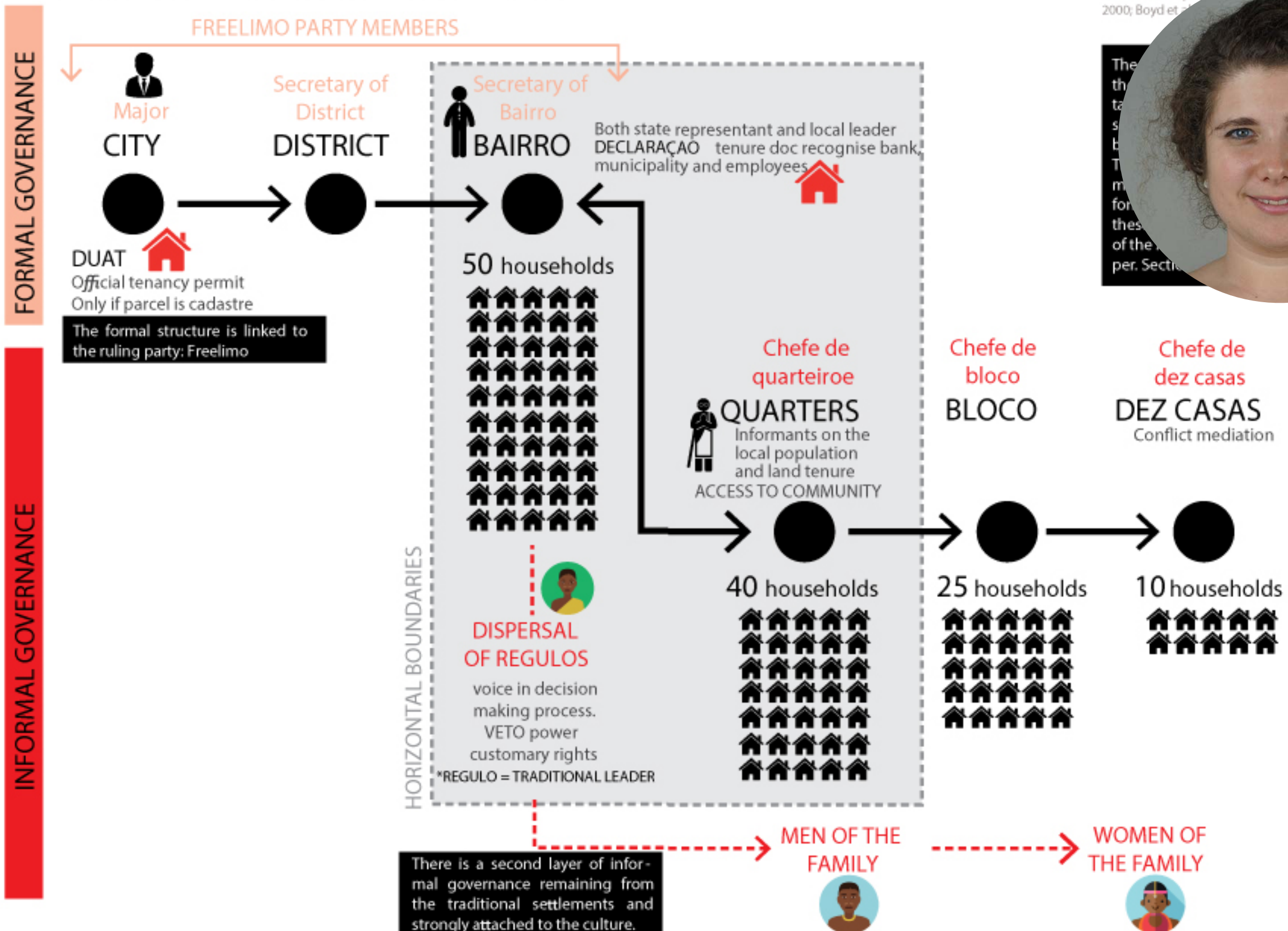
# Maputo



# Concha Aranda: Mappina informal institutions in Maputo

04-04- A GLIMPSE ON THE CURRENT SOCIAL NETWORK

Image 89. Current social network  
Source: developed by Concha Aranda, University of Jenkins, P.  
2000; Boyd et al.





Kritika Sha:  
Building slum  
upgrading  
strategy in  
Dharavi  
having the  
local economy  
and  
livelihoods  
as point to  
departure

Recycling

Embroidery

Leather

Bandra - Kurla  
Complex (2.4km)

International  
(4.8 km)

Mahim Jn.

Mixed Industries

Pottery

Guru Tegh  
Bahadur Nagar

Wadala Bus  
Terminal  
(2.4 km)

Mumbai Port (9.65 km)

Mumbai  
(8.5 mins)

Navi  
Mumbai  
(7.7 km)

#### INDUSTRY CONCENTRATION IN DHARAVI

Intensity of Productivity  
High Low

Major industries Transport routes

Railway lines & station Major Roads

Map derived from: Reclaim Growth - SP+A & UrbZ, Mumbai

0 km 0.2 km 0.4 km

Figure 3.24



element also attempts to renegotiate and reformulate existing stakeholder relationships in order to ensure implementation at a larger scale. Each element comprises of a balance of spatial guidelines that directs the spatial quality of the redevelopment,

along with policy recommendations which enable the execution of the project.

The three elements are – [Re]Divide, [Re]Inforce, and [Re]Structure.



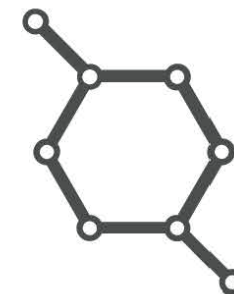
## ELEMENTS STRATEGIC FRAME



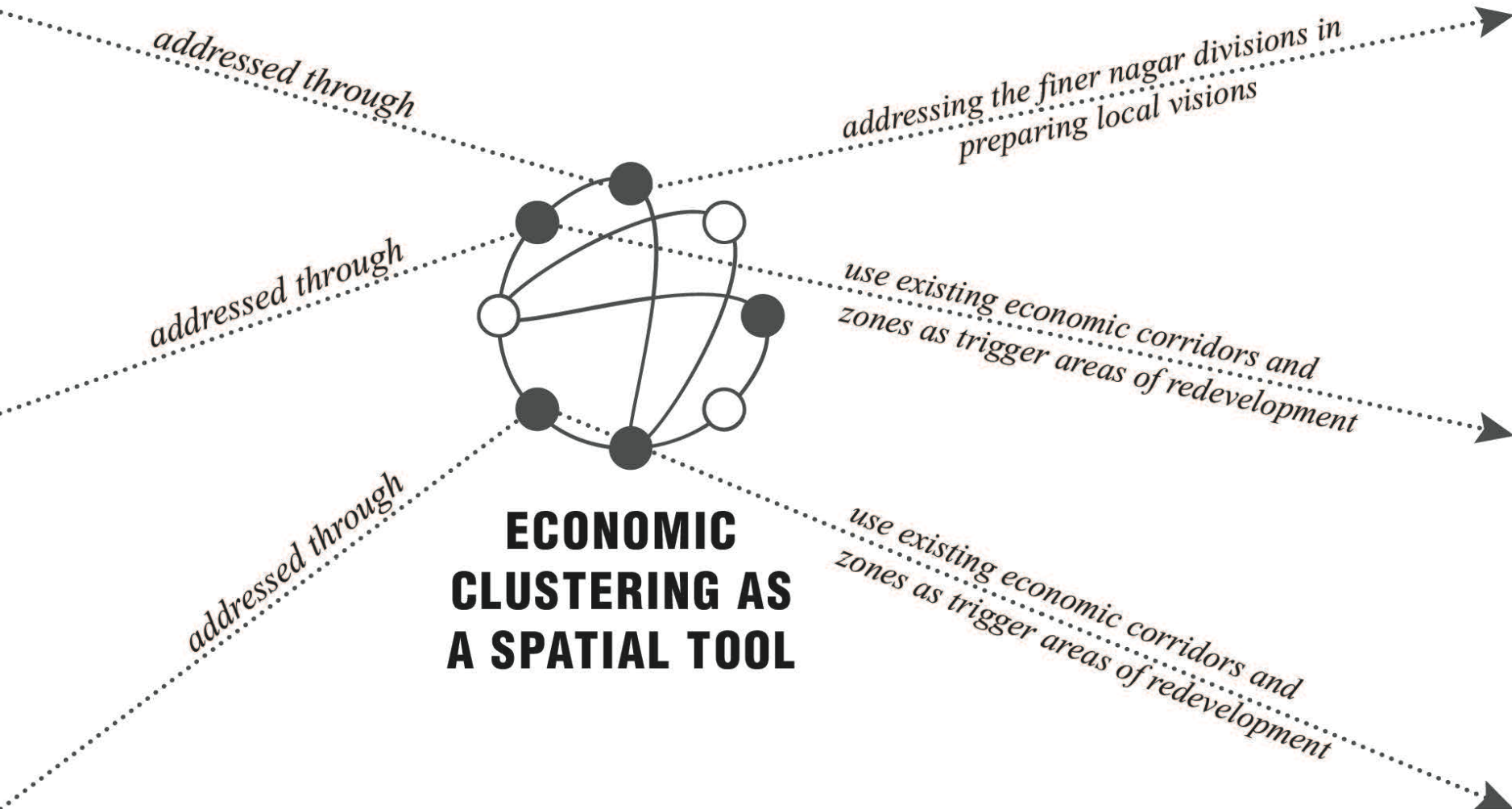
**[RE] DIVIDE**



**[RE] INFORCE**



**[RE] STRUCTURE**



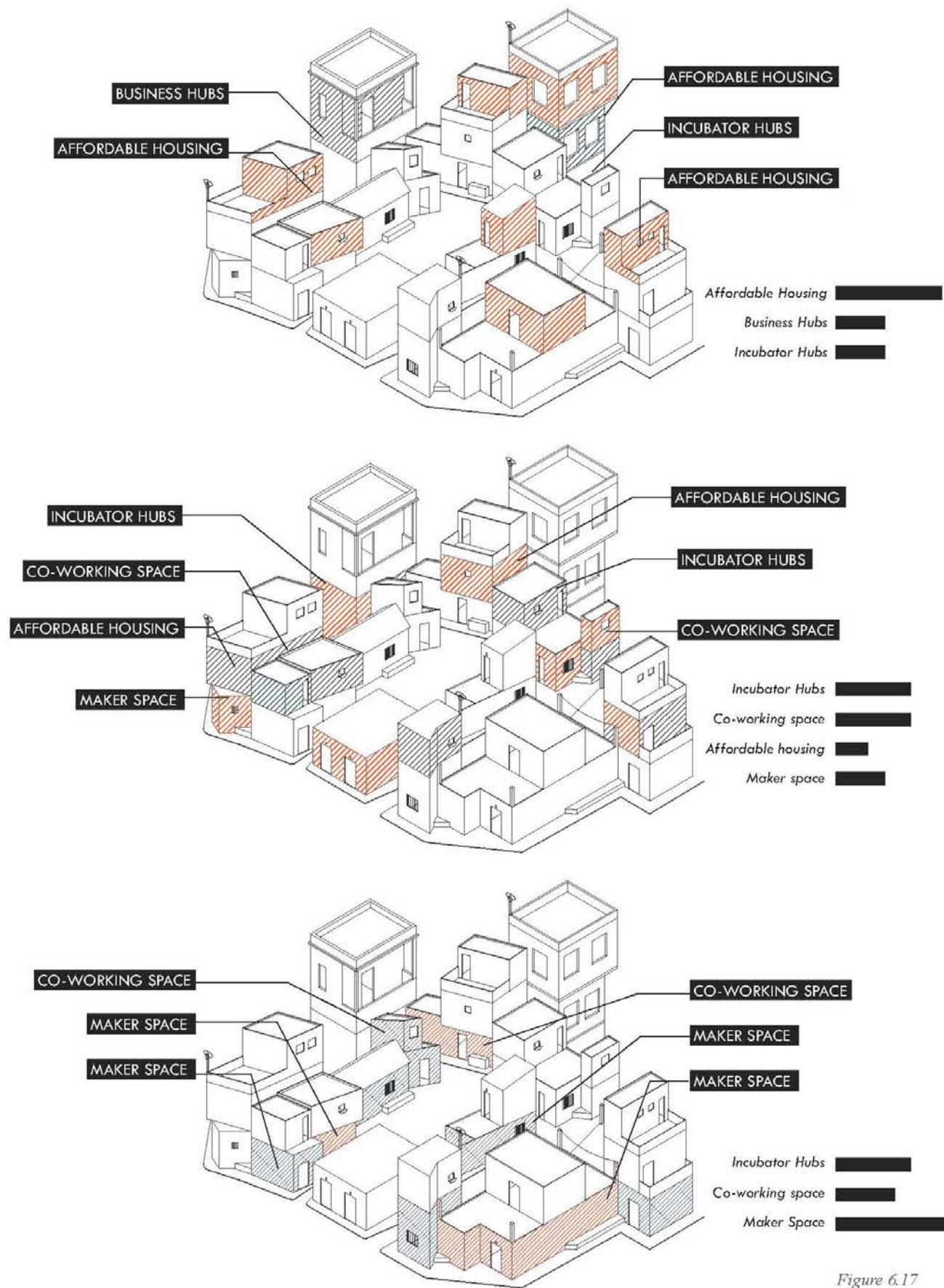
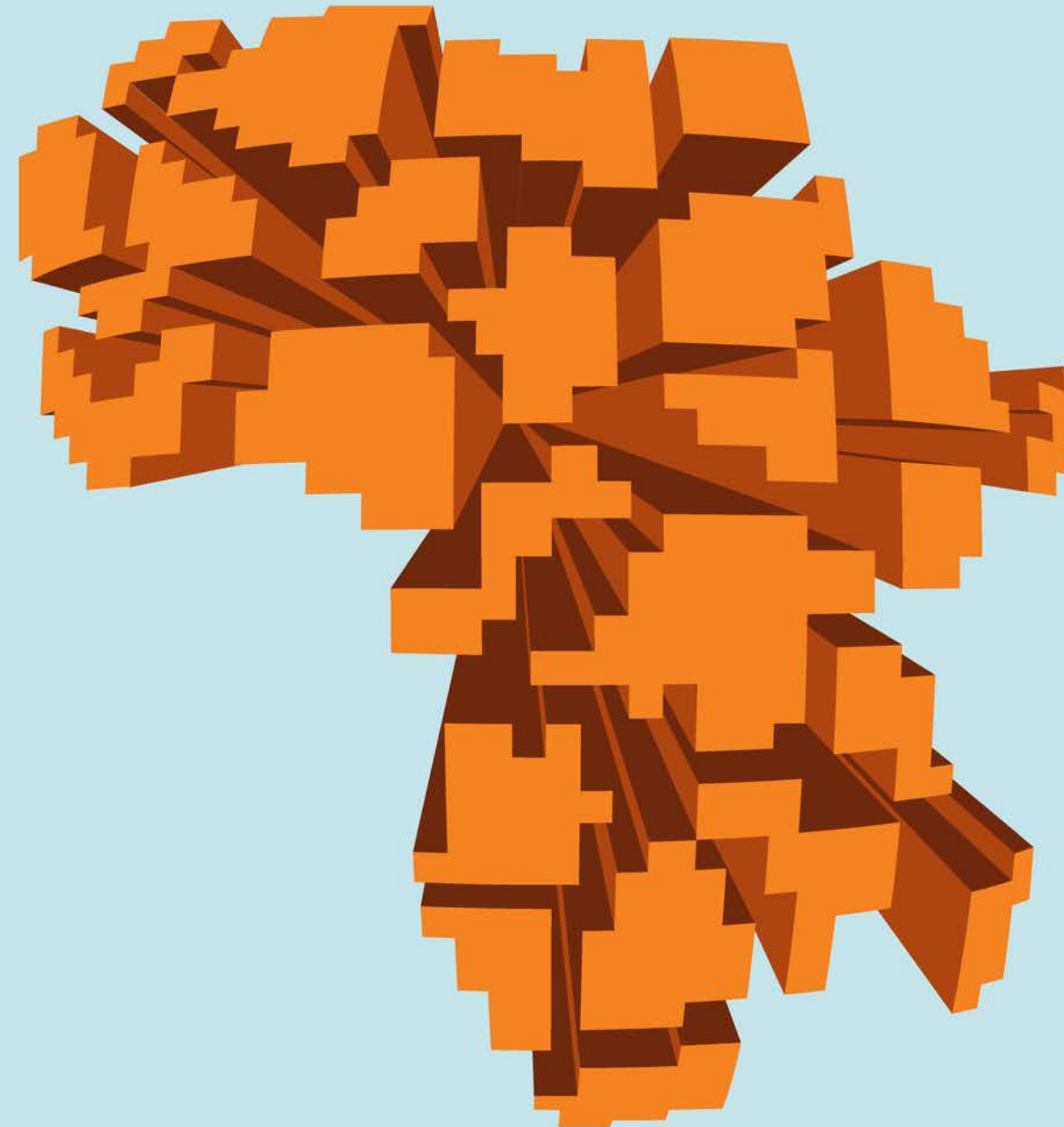


Figure 6.17

Different spatial and functional components of the design framework element at a single community level







# AFRICAN PERSPECTIVES 2018



# BK URBANISM IN AFRICA

[BK STUDENTS IN AFRICA](#)[BLOG](#)[ABOUT](#)[EVENTS](#)

## BK STUDENTS IN AFRICA

<https://bkafrica.wordpress.com>

By 2040, more than half of Africa's population will live in cities. What does urbanization mean?

Follow the experiences of seven Urbanism and Landscape students who are conducting their Master graduation projects in different countries on the African continent. We examine histories of development and inequality, and contemporary dynamics in making, transforming, and managing urban environments. We want to bring Africa bring them into larger discussions about transforming space, economy, and society today.

*"It is the place where the greatest potential to make more people's lives better can be realised. This is an issue of Architecture and the Built*



# Specific topic 2019-2020

For more information, please visit the studio website:  
<https://complexcitiesstudio.org>

# Union for the Mediterranean



Union for the Mediterranean  
Union pour la Méditerranée  
الإتحاد من أجل المتوسط





The UfM: an action-driven  
organisation with a common ambition

The Union for the Mediterranean (UfM) is an intergovernmental Euro-Mediterranean organisation which brings together all 28 countries of the European Union and 15 countries of the Southern and Eastern Mediterranean.

The Union for the Mediterranean (UfM)  
is an intergovernmental  
Euro-Mediterranean organisation  
which brings together all 28 countries  
of the European Union and 15 countries  
of the Southern and Eastern  
Mediterranean.



# The Mediterranean is a cradle and a crossroads



# It does have important challenges

1. CLIMATE,
2. NATURAL RESOURCES,
3. COMMERCE & DEVELOPMENT,
4. HERITAGE,
5. IMMIGRANTS & REFUGEES



# New Urban Agenda for the Mediterranean

To promote integrated, sustainable, resilient, fair and inclusive urban regeneration and development across the Mediterranean region as a means to foster human development, economic prosperity, political stability and overall sustainability.



**TU Delft is the lead knowledge partner,  
in charge of:**

- 1. Surveying, connecting and articulating partners**
- 2. Writing the action plan**
- 3. Leading educational efforts in the region (with workshops and summer schools)**

**We invite students to:**



To develop their graduation project **in line with** the UfM action plan proposal

To **work collaboratively** with mentors and other students on activities leading up to the action plan, including possible workshops and other activities with schools in the region



**To access resources and stakeholders in cities and regions included in the UfM action plan**

**To experience a real-life governance and design project connected to the European Union and its partners in the Mediterranean basin.**

To develop **exemplary projects** that  
will be considered in discussions  
about sustainable urban  
development in the region



To contribute with data and evidence gathering, including for example then organisation of a database of schools of planning and design around the Mediterranean.

**Key areas of action**





# Informal settlements and deprived neighbourhoods as focus points for the creation of inclusive cities and communities



By No machine-readable author provided. Bertilvidet~ commonswiki assumed (based on copyright claims). - No machine-readable source provided. Own work assumed (based on copyright claims)., CC BY 2.5, <https://commons.wikimedia.org/w/index.php?curid=666638>





Former brownfields and railway sites as focus points for urban regeneration and area redevelopment





# Heritage and tourism as drivers of economic prosperity

<https://travelnoire.com/red-city-of-morocco>





# Port-cities and their hinterlands as drivers of sustainable economic prosperity

<https://www.neweurope.eu/article/eu-morocco-relations-to-prosper-after-kick-start-of-largest-mediterranean-port-tanger-med/>





# Thanks for watching & listening!

Should you have any doubts, please contact

[r.c.rocco@tudelft.nl](mailto:r.c.rocco@tudelft.nl)

And visit our BLOG

[www.spatialplanningtudelft.eu](http://www.spatialplanningtudelft.eu)

ROUTLEDGE  
ROUTLEDGE  
HANDBOOKS



# The Routledge Handbook on Informal Urbanization

Edited by Roberto Rocco and Jan van Ballegooijen



[https://  
confrontinginformality.wordpress.com](https://confrontinginformality.wordpress.com)



<https://utctudelft.org>

**URBAN  
THINKERS  
CAMPUS**

THE CITY WE NEED



**UN HABITAT**  
FOR A BETTER URBAN FUTURE

**7-9 JUNE  
TU DELFT**

Faculty of Architecture  
and The Built Environment

# EDUCATION FOR THE CITY WE NEED

Exploring how to integrate the UN-Habitat  
NEW URBAN AGENDA in higher education curricula

Urban Thinkers Campuses are sponsored by the World Urban Campaign and UN-HABITAT. The TU Delft UTC wishes to gather stakeholders from the academic and educational worlds, as well as NGOs, companies and government agencies, to discuss how best to TEACH and LEARN issues related to and stemming from the New Urban Agenda in higher education.

**Our main question is:**

How to prepare young professionals to understand and implement the New Urban Agenda in very diverse national and local environments?

This is an initiative from TU Delft in partnership with TU-Eindhoven, IHS-Erasmus Rotterdam, supported by TU Delft Global Initiative, Arcadis and others.



**TU Delft**

Global Initiative

[utctudelft.wordpress.com](https://utctudelft.wordpress.com)